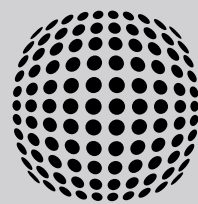


dreamoc<sup>TM</sup>  
diamond



REALFICTION<sup>TM</sup>



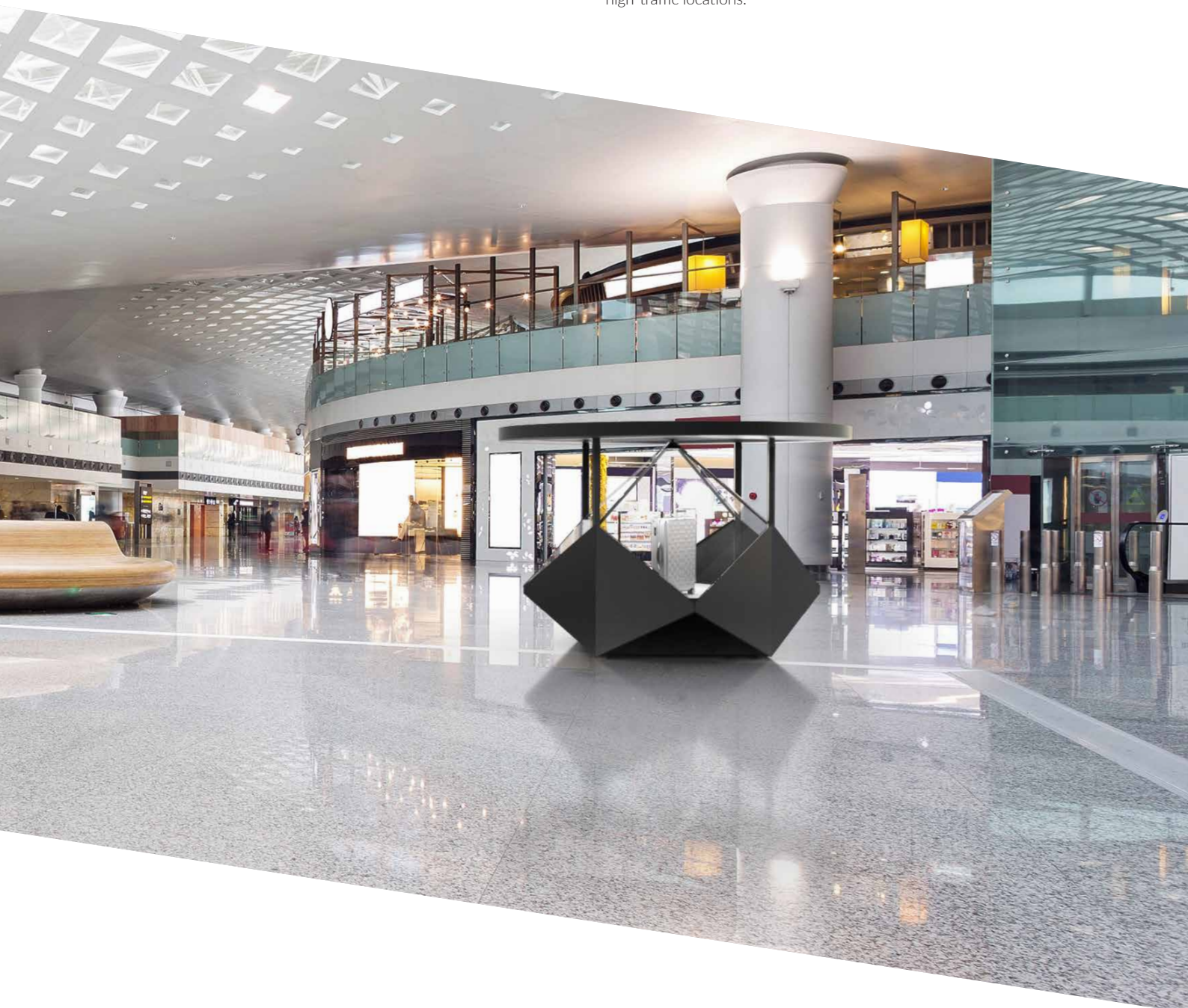


# THE EXCLUSIVE DREAMOC DIAMOND

Present your brand and product in the most elegant way imaginable. The Dreamoc Diamond brings an innovative and highly attractive approach to driving attention, positioning brand values and showcasing distinctive product features. It literally draws you in and keeps you there.

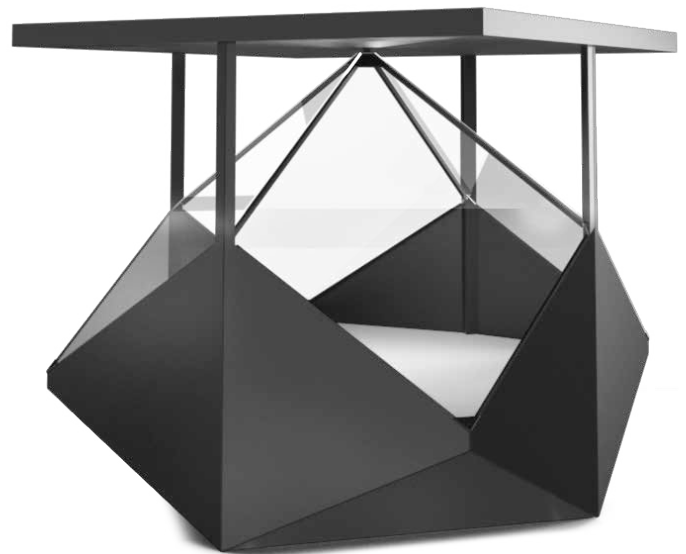
## UNPARALLELED AND ELEGANT

Derived from the aesthetic shape of a diamond, this new type of holographic display elegantly glorifies your product in the most visually impressive way. Designed and developed in collaboration with Danish designer Steffen Schmelling, the Dreamoc Diamond offers our most exquisite Dreamoc experience at this time. With 4-sided visibility, the Dreamoc Diamond is one of our largest mixed reality displays ever built, specifically designed for events and brand activations in shopping malls, trade fairs and other high-traffic locations.



## FLAWLESS DESIGN WITH EVEN MORE SPACE

The diamond-shaped optics allow for larger products than ever before to become enveloped by superimposed holographic content. The slim cabinet features the characteristic angled design, and the platform height inside can be adjusted to fit small products such as exclusive watches or jewelry, as well as very large products such as premium suitcases or even designer furniture.



## EYE-OPENING ENGAGEMENT

The Dreamoc Diamond is abundant with newly developed features. You can boost your presence and branding outreach even further by adding a customizable billboard on top of the display cabinet. By rethinking the entire architecture of a holographic display, we developed a new type of light source inside the display that perfectly illuminates your product from all four sides and removes any blunt shadows at the same time.

Adding to the immersive experience, directional sound effects are made possible with new active speakers that successfully bounces sound waves directly off the large optics.

## HIGHLIGHTED FEATURES



**Customizable billboard** - Boost your presence and branding even further by adding an optional billboard on top of the cabinet.



**4-sided LED lighting** - A new type of light source inside the display that illuminates your product from all four sides.



**Safety laminated 7mm Crystalline™ Optics** - Higher clarity, more brightness and increased durability.



**Active speakers** - Create directional sound effects to amplify the immersive experience.

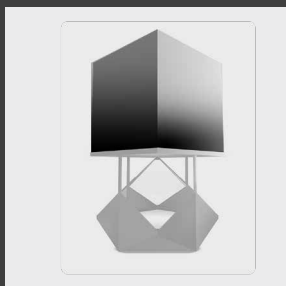


**1-hour assembly time** - The displays simple and smart construction equals very fast assembly time.



**Adjustable platform height** - Showcase everything from small premium products like watches or jewelry, all the way up to large exclusive suitcases or even designer furniture.

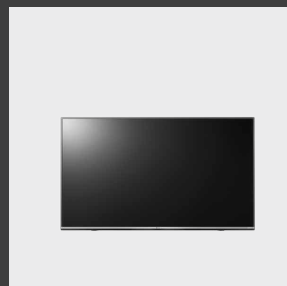
## OPTIONAL ACCESSORIES



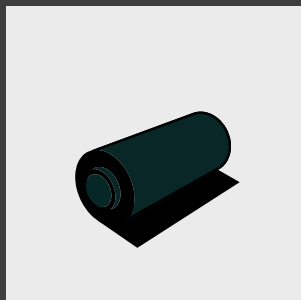
BILLBOARD



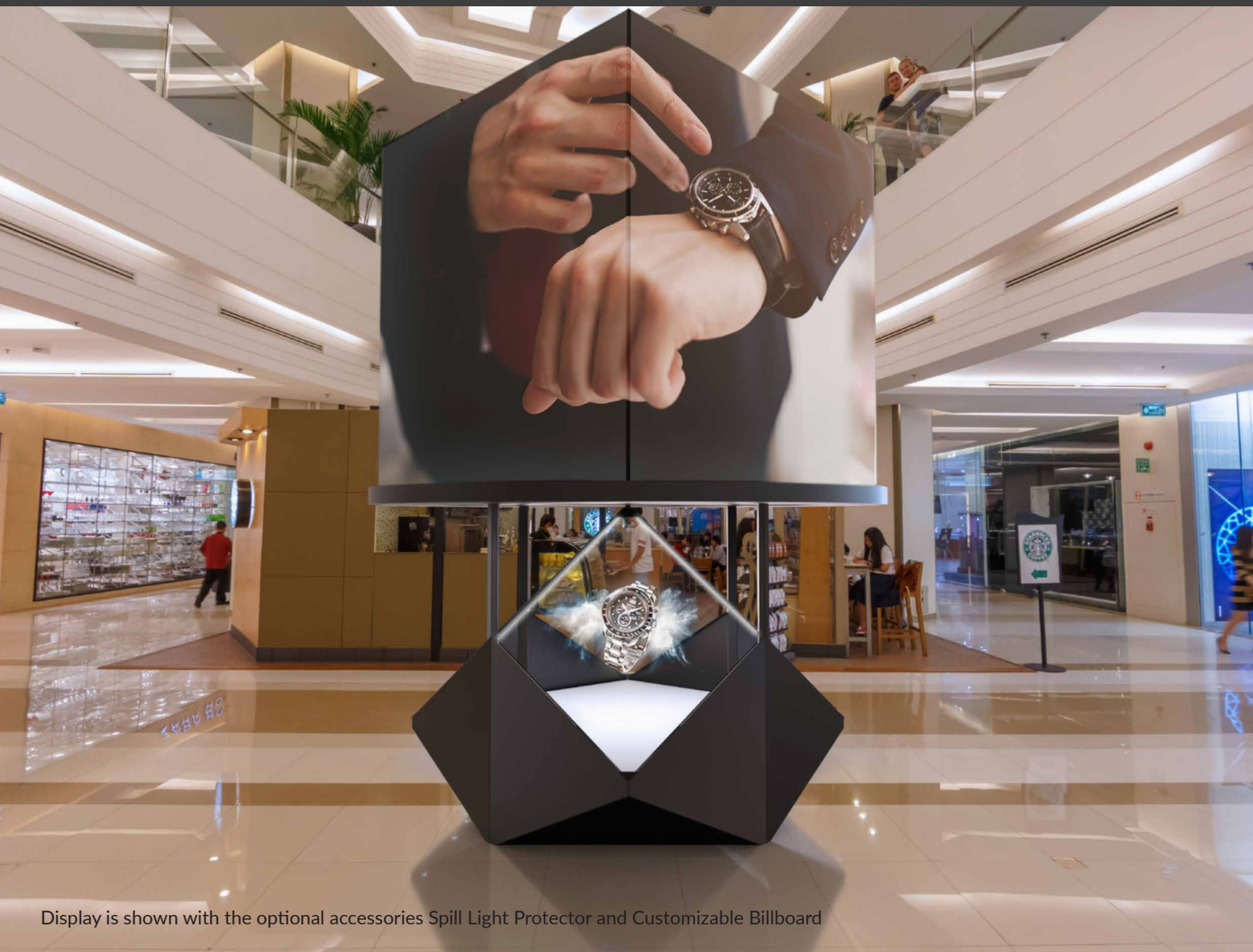
SPILL LIGHT PROTECTOR



4K SCREEN UPGRADE



MAGNETIC SKINS



Display is shown with the optional accessories Spill Light Protector and Customizable Billboard

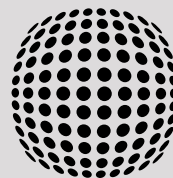
PHONE: +45 70 20 64 90

ADDRESS: ØSTER ALLE 42, 7TH FLOOR

DK-2100 COPENHAGEN Ø - DENMARK

EMAIL: [CONTACT@REALFICTION.COM](mailto:CONTACT@REALFICTION.COM)

[WWW.REALFICTION.COM](http://WWW.REALFICTION.COM)



REALFICTION™